

OPTIMAL CONTROL AND NUMERICAL ADAPTIVITY FOR ADVECTION–DIFFUSION EQUATIONS

Luca DEDE' and Alfio QUARTERONI

16th February 2005

MOX– Modellistica e Calcolo Scientifico
Dipartimento di Matematica “F. Brioschi”
Politecnico di Milano
via Bonardi 9, 20133 Milano, Italy
luca.dede@mate.polimi.it
alfio.quarteroni@epfl.ch

Keywords

Optimal Control Problems; Partial Differential Equations; Finite Element Approximation; Stabilized Lagrangian; Numerical Adaptivity; Advection–Diffusion Equations.

Abstract

We propose a general approach for the numerical approximation of optimal control problems governed by a linear advection–diffusion equation, based on a stabilization method applied to the Lagrangian functional, rather than stabilizing the state and adjoint equations separately. This approach yields a coherently stabilized control problem. Besides, it allows a straightforward a posteriori error estimate in which estimates of higher order terms are needless. Our a posteriori estimates stems from splitting the error on the cost functional into the sum of an iteration error plus a discretization error. Once the former is reduced below a given threshold (and therefore the computed solution is “near” the optimal solution), the adaptive strategy is operated on the discretization error. To prove the effectiveness of the proposed methods, we report some numerical tests, referring to problems in which the control term is the source term of the advection–diffusion equation.

1 Introduction

Many physical problems can be modelled by linear advection–diffusion partial differential equations; this is the case for example if we want to forecast the distribution of a substance in a continuous medium, such as a pollutant in air or water. In this contest it is interesting to operate the source terms (e.g. the emission rate of pollutants) in order that the PDE solution approaches as closely as possible a desired distribution (or, otherwise said, the concentration of pollutant stands below a pre–assigned threshold). This aspect can be conveniently accommodated in the framework of the optimal control theory, for which we assume as control function the source term, while the “observation” is a function depending on the PDE solution. The classical approach to this kind of

problems is based on the theory developed by J.L. Lions [10] (see also [2, 13, 15, 17]), or, as complementary to the previous one, on the Lagrangian functional formalism [3]. By adopting the latter methodology, which is useful for practical problems, but it does not ensure the existence and uniqueness of solution (see [1]), we address a generic optimal control problem applied to an advection–diffusion equation. For its approximation we use an iterative method applied to the Galerkin-FE discretization of both state and adjoint equations. To get rid of numerical instabilities arising in the transport dominated regimes, we propose a stabilization on the Lagrangian functional term, introducing the *Stabilized Lagrangian* concept, rather than stabilizing separately the state and adjoint equations [16]. By this approach we achieve intrinsic coherence between the stabilized state and adjoint equations. Moreover, we propose a posteriori estimate of the error on the control problem, that we interpret as the error on the cost functional [3, 4], i.e. on the observation of the system. With this approach we treat the error contribution arising from the numerical discretization separately from the one arising from the iteration process, in view of operating the grid adaptation. More precisely, our a posteriori estimates stem from splitting the error on the cost functional into the sum of an iteration error plus a discretization error. Once the former is reduced below a given threshold (and therefore the computed solution is “near” the optimal solution), the adaptive strategy is operated on the discretization error.

We prove the effectiveness of the proposed method on a couple of test cases in which the advection–diffusion equation is associated to a pollution problem (atmospheric and hydraulic) for which the control term is the source term of the equation. In this contest the problems can be interpreted as emission control problems, e.g. the control of the rate of emission to keep the pollutant level in water (or in air) below a desired threshold.

An outline of this paper is as follows. In Sec.2 we formulate an abstract control problem, for a linear advection–diffusion equation. In Sec.3 we introduce the Stabilized Lagrangian concept and provide a complete analysis of the stabilized control problem. In Sec.4 we propose the separation of the iteration and discretization error, for which we provide the a posteriori error estimate; we also report a method to introduce the grid adaptivity in the contest of the iterative optimization and we propose a quadratic reconstruction method in order to compute the error indicator. In Sec.5 we report some numerical results applied to two test problems, for which we show the effectiveness of the proposed methods.

2 Optimal Control Problem for Advection–Diffusion Equations

We start by providing a general approach for the analysis of optimal control problems, that we will apply to the particular case of problems governed by a linear advection–diffusion equation.

2.1 An abstract formulation for optimal control

To analyze optimal control problems, we adopt the *Lagrangian* approach [3], in the *linear elliptic* case. This approach results complementary to the analysis on optimal control, developed by J.L. Lions [10], however it allows a systematical mean to define appropriate *a posteriori* error estimates.

The goal is to minimize a *cost functional* $J = J(w, u)$ so that a *state equation* is satisfied, i.e.:

$$J = J(w, u) \quad \min !, \quad Aw = f + Bu, \quad (1)$$

where A is an elliptic differential operator, w is the state variable and B a differential operator acting on the control variable u in state equation. By introducing the Lagrangian functional and a Lagrangian multiplier p :

$$\mathcal{L}(w, p, u) := J(w, u) + \langle p, f + Bu - Aw \rangle, \quad (2)$$

problem (1) has a unique solution (for the linear case see [10]) which satisfies the PDE system:

$$\nabla \mathcal{L}(w, p, u) = 0. \quad (3)$$

Considering $w \in \mathcal{V}$, $u \in \mathcal{U}$, with \mathcal{V} and \mathcal{U} being two suitable Hilbert spaces, we have the following weak form for state equation (1):

$$a(w, \varphi) = (f, \varphi) + b(u, \varphi), \quad \forall \varphi \in \mathcal{V}, \quad (4)$$

where (\cdot, \cdot) is the $L^2(\Omega)$ inner product, $a(\cdot, \cdot)$ is a bilinear form associated to the linear elliptic operator while $b(\cdot, \cdot)$ is the bilinear form associated with Bu , that is $b(u, \varphi) = \langle Bu, \varphi \rangle$. We assume that the cost functional has the following form [10]:

$$J(w, u) := \frac{1}{2} \|Cw - z_d\|^2 + \frac{1}{2} n(u, u), \quad (5)$$

where the operator C takes the state variable w into the observation space \mathcal{Z} (a Hilbert space), z_d is the observation function, $\|\cdot\|$ is a suitable norm, and $n(\cdot, \cdot)$ is a non-negative Hermitian form. Then:

$$\mathcal{L}(w, p, u) = J(w, u) + b(u, p) + (f, p) - a(w, p). \quad (6)$$

The optimal control solution consists in solving the following problem:

$$\text{find } (w, p, u) \in \mathcal{V} \times \mathcal{V} \times \mathcal{U} \quad \text{s.t.} \quad \nabla \mathcal{L}(w, u, p)[(\varphi, \phi, \psi)] = 0, \quad \forall (\varphi, \phi, \psi) \in \mathcal{V} \times \mathcal{V} \times \mathcal{U}. \quad (7)$$

Derivatives are to be intended in *Fréchet* sense [8], so that, from Eq.(7), we have:

$$\begin{cases} \mathcal{L}_{,w}[\varphi] = (Cw - z_d, C\varphi) - a(p, \varphi) = 0, & \forall \varphi \in \mathcal{V}, \\ \mathcal{L}_{,p}[\phi] = (f, \phi) + b(u, \phi) - a(w, \phi) = 0, & \forall \phi \in \mathcal{V}, \\ \mathcal{L}_{,u}[\psi] = b(p, \psi) + n(u, \psi) = 0, & \forall \psi \in \mathcal{U}, \end{cases} \quad (8)$$

The differential $\mathcal{L}_{,p}$ corresponds, in weak form, to the state equation, $\mathcal{L}_{,w}$ to the *adjoint equation* and $\mathcal{L}_{,u}$ to an optimal control constraint. The function p is the adjoint variable and expresses the cost functional sensitivity to the variations of the control variable u ; the optimal control constraint $\mathcal{L}_{,u}[\psi]$, in weak form, can be related to a strong derivative J' (cost functional derivative) by means of Riesz Theorem. Indeed, $\mathcal{L}_{,u}[\psi] = \langle J'(p, u), \psi \rangle = (J'(p, u), \psi)$.

The control problem is solved by an iterative method, starting with an initial value for the control variable u^0 . At each step $j \geq 0$ we solve the state equation; then we

compute the value of the cost functional and we solve the adjoint equation. Once p^j is available, we determine the cost functional derivative $J'(p^j, u^j)$ and apply a suitable stopping criterium. If this criterium is not fulfilled, we adopt an optimization iteration on control function u ; for example we use a *steepest-descent* method:

$$u^{j+1} = u^j - \tau^j J'(p^j, u^j), \quad (9)$$

where τ^j is a relaxation parameter that can be determined by analyzing the mathematical properties of the control problem [1],[19].

2.2 Optimal control problem governed by an advection–diffusion equation

We apply the general approach for linear elliptic problems proposed in the previous section to the case of an advection–diffusion state equation:

$$\begin{cases} L(w) := -\nabla \cdot (\nu \nabla w) + \mathbf{V} \cdot \nabla w = u, & \text{in } \Omega \subset \mathbb{R}^2, \\ w = 0, & \text{on } \Gamma_D, \\ \nu \frac{\partial w}{\partial n} = 0, & \text{on } \Gamma_N, \end{cases} \quad (10)$$

where w is the state variable, $u \in L^2(\Omega)$ is the control function defined on the domain Ω , while ν and \mathbf{V} depend on the domain coordinates (x, y) . We have imposed a homogeneous Dirichlet condition over inflow boundary $\Gamma_D := \{\mathbf{x} \in \partial\Omega : \mathbf{V}(\mathbf{x}) \cdot \mathbf{n}(\mathbf{x}) < 0\}$, where $\mathbf{n}(\mathbf{x})$ is the unit vector directed outward, and homogeneous Neumann condition on the outflow boundary $\Gamma_N := \partial\Omega \setminus \Gamma_D$. Let us notice that, for the sake of simplicity, we have considered homogeneous conditions on both Dirichlet and Neumann boundaries; however our approach is straightforward to apply to problems with non-homogeneous boundary conditions. Defining the observation of the system on a part D of the domain Ω ($D \subseteq \Omega$), the optimal control problem reads:

$$\text{find } u : J(w, u) := \frac{1}{2} \int_D (g w(u) - z_d)^2 dD \quad \text{min}!, \quad (11)$$

where $D \subseteq \Omega$ is the domain of observation, $g \in C^\infty(D)$ is a function that project the state solution w in the observation space, while z_d represents the desired observation function. Note that Eq.(11) is a special case of Eq.(5) in which $n(\cdot, \cdot) = 0$. The domain reported in Fig.1 is typical for this kind of problems.

Defining $H_{\Gamma_D}^1 := \{v \in H^1(\Omega) : v|_{\Gamma_D} = 0\}$, the weak form of Eq.(10) reads:

$$\text{find } w \in H_{\Gamma_D}^1(\Omega) : a(w, \varphi) = F(\varphi; u), \quad \forall \varphi \in H_{\Gamma_D}^1(\Omega), \quad (12)$$

where:

$$a(w, \varphi) := \int_{\Omega} \nu \nabla w \cdot \nabla \varphi d\Omega + \int_{\Omega} \mathbf{V} \cdot \nabla w \varphi d\Omega, \quad (13)$$

$$F(\varphi; u) := \int_{\Omega} u \varphi d\Omega. \quad (14)$$

The Lagrangian functional becomes:

$$\mathcal{L}(w, p, u) := J(w, u) + F(p; u) - a(w, p), \quad (15)$$

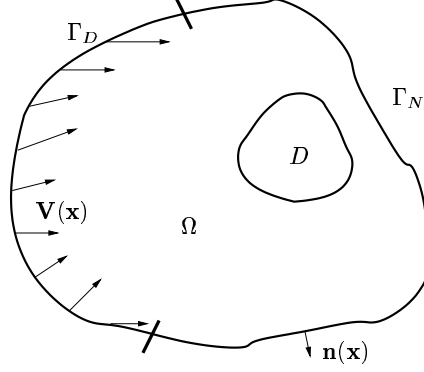


Figure 1: Domain for the advection–diffusion control problem (11).

where $p \in H_{\Gamma_D}^1(\Omega)$ is the Lagrange multiplier. By differentiating \mathcal{L} with respect to the state variable $(\mathcal{L}, w[\phi])$, we obtain the adjoint equation in weak form:

$$\text{find } p \in H_{\Gamma_D}^1(\Omega) \quad : \quad a^{ad}(p, \phi) = F^{ad}(\phi; w), \quad \forall \phi \in H_{\Gamma_D}^1(\Omega), \quad (16)$$

where:

$$a^{ad}(p, \phi) := \int_{\Omega} \nu \nabla p \cdot \nabla \phi \, d\Omega + \int_{\Omega} \mathbf{V} \cdot \nabla \phi \, p \, d\Omega, \quad (17)$$

$$F^{ad}(\phi; w) = \int_D (g w - z_d) g \phi \, dD, \quad (18)$$

that is (in distributional sense):

$$\begin{cases} L^{ad}(p) := -\nabla \cdot (\nu \nabla p + \mathbf{V} p) = \chi_D g (g w - z_d), & \text{in } \Omega, \\ p = 0, & \text{on } \Gamma_D, \\ \nu \frac{\partial p}{\partial n} + \mathbf{V} \cdot \mathbf{n} p = 0, & \text{on } \Gamma_N, \end{cases} \quad (19)$$

where χ_D is the characteristic function of the subdomain D . By differentiating \mathcal{L} with respect to the control function u we obtain the optimal condition constraint in weak form:

$$\mathcal{L}_{,u}[\psi] = \int_{\Omega} p \psi \, d\Omega = 0, \quad \forall \psi \in L^2(\Omega), \quad (20)$$

from which we obtain the cost functional derivative:

$$J'(p) = p. \quad (21)$$

If we use the iterative procedure (9), in the current case the following stopping criterium can be adopted:

$$\|J'(p)\|_{L^2(\Omega)} = \|p\|_{L^2(\Omega)} < Tol. \quad (22)$$

3 Numerical Discretization: the Stabilized Lagrangian

To solve the control problem we adopt an iterative method as described in Sec.2.1. At each step, we solve both the state and adjoint equations by a Galerkin finite element method using linear elements on unstructured meshes, composed by triangular elements $\{K\}$ s.t. $\bigcup_{K \in \mathcal{T}_h} K = \overline{\Omega}$, where \mathcal{T}_h is the union of triangles covering the domain Ω .

Both state and adjoint equations are diffusion–transport equations, in which the transport term can dominate the diffusion term; a suitable stabilization is mandatory. To avoid numerical instabilities and their propagation in the course of the optimization iterative method, we propose a stabilization directly on the Lagrangian functional, introducing the *Stabilized Lagrangian* concept, instead of stabilizing separately state and adjoint equations [4] in a conventional manner [16].

The Stabilized Lagrangian is defined as:

$$\mathcal{L}_h(w, p, u) := \mathcal{L}(w, p, u) + S_h(w, p, u), \quad (23)$$

with:

$$S_h(w, p, u) := \sum_{K \in \mathcal{T}_h} \delta_K \int_K R(w; u) R^{ad}(p; w) dK. \quad (24)$$

The terms $R(w; u)$ and $R^{ad}(p; w)$ represent the residuals of the state and adjoint equations respectively, while δ_K is a stabilization parameter depending on the local Péclet number $\mathbb{P}e_K := \frac{|\mathbf{V}|_{\infty, K} h_K}{2\nu}$ [7], being h_K the diameter of the element $K \in \mathcal{T}_h$, while $|\mathbf{V}|_{\infty, K}$ is the maximum length of \mathbf{V} on K . More precisely, from Eq.(10) and Eq.(19), we obtain:

$$R(w; u) := L(w) - u, \quad (25)$$

$$R^{ad}(p; w) := L^{ad}(p) - G(w), \quad (26)$$

$$G(w) := \chi_{DG} (g w - z_d). \quad (27)$$

Considering the Galerkin–FE approximation and differentiating the Stabilized Lagrangian with respect to the adjoint variable, we obtain the stabilized state equation in weak form:

$$\text{find } w_h \in X_h \quad : \quad a(w_h, \varphi_h) + s_h(w_h, \varphi_h; u_h) = F(\varphi_h; u_h), \quad \forall \varphi_h \in X_h, \quad (28)$$

with:

$$s_h(w_h, \varphi_h; u_h) := - \sum_{K \in \mathcal{T}_h} \delta_K \int_K R(w_h; u_h) L^{ad}(\varphi_h) dK. \quad (29)$$

Equivalently, the state equation reads:

$$\text{find } w_h \in X_h \quad : \quad a_h(w_h, \varphi_h) = F_h(\varphi_h; u_h), \quad \forall \varphi_h \in X_h, \quad (30)$$

where:

$$a_h(w_h, \varphi_h) := a(w_h, \varphi_h) - \sum_{K \in \mathcal{T}_h} \delta_K \int_K L(w_h) L^{ad}(\varphi_h) dK, \quad (31)$$

$$F_h(\varphi_h; u_h) := F(\varphi_h; u_h) - \sum_{K \in \mathcal{T}_h} \delta_K \int_K u_h L^{ad}(\varphi_h) dK. \quad (32)$$

Similarly, by differentiating the Stabilized Lagrangian with respect to the state variable, we obtain the stabilized adjoint equation:

$$\text{find } p_h \in X_h \quad : \quad a^{ad}(p_h, \phi_h) + s_h^{ad}(p_h, \phi_h; w_h) = F^{ad}(\phi_h; w_h), \quad \forall \phi_h \in X_h, \quad (33)$$

where:

$$s_h^{ad}(p_h, \phi_h; w_h) := - \sum_{K \in \mathcal{T}_h} \delta_K \int_K (R^{ad}(p_h; w_h) L(\phi_h) - R(w_h; u_h) G'(\phi_h)) dK, \quad (34)$$

and:

$$G'(w) := \chi_D g^2 w. \quad (35)$$

Equivalently, the adjoint equation reads:

$$\text{find } p_h \in X_h \quad : \quad a_h^{ad}(p_h, \phi_h) = F_h^{ad}(\phi_h; w_h; u_h), \quad \forall \phi_h \in X_h, \quad (36)$$

where:

$$a_h^{ad}(p_h, \phi_h) := a^{ad}(p_h, \phi_h) - \sum_{K \in \mathcal{T}_h} \delta_K \int_K L^{ad}(p_h) L(\phi_h) dK, \quad (37)$$

and:

$$F_h^{ad}(\phi_h; w_h; u_h) := F^{ad}(\phi_h; w_h) - \sum_{K \in \mathcal{T}_h} \delta_K \int_K (G(w_h) L(\phi_h) + R(w_h; u_h) G'(\phi_h)) dK. \quad (38)$$

Notice that the terms $a(w_h, \varphi_h)$, $F(\varphi_h; u_h)$, $a^{ad}(p_h, \phi_h)$ and $F^{ad}(\phi_h; w_h)$ are defined in Eq.s (13), (14), (17) and (18), u_h is a discrete approximation of the control function u and $X_h \subset H_{\Gamma_D}^1$ is the finite element space. In this way we obtain discrete state and adjoint equations that can be regarded as Galerkin approximations to the exact state and adjoint equations, plus extra terms deriving from differentiating the term S_h in Eq.(23). Considering the state equation, we note that this extra term differs from the one that we could have obtained by stabilizing directly the state equation by means of a strongly consistent method like the GLS (Galerkin Least Squares) method [16], that is:

$$\text{find } w_h \in X_h \quad : \quad a(w_h, \varphi_h) + \tilde{s}_h(w_h, \varphi_h; u_h) = F(\varphi_h; u_h), \quad \forall \varphi_h \in X_h, \quad (39)$$

with:

$$\tilde{s}_h(w_h, \varphi_h; u_h) := \sum_{K \in \mathcal{T}_h} \delta_K \int_K R(w_h; u_h) L(\varphi_h) dK. \quad (40)$$

In the same manner we can apply the stabilization by a GLS method to the adjoint equation, obtaining the following weak form:

$$\text{find } p_h \in X_h \quad : \quad a^{ad}(p_h, \phi_h) + \tilde{s}_h^{ad}(p_h, \phi_h; w_h) = F^{ad}(\phi_h; w_h), \quad \forall \phi_h \in X_h, \quad (41)$$

with:

$$\tilde{s}_h^{ad}(p_h, \phi_h; w_h) := \sum_{K \in \mathcal{T}_h} \delta_K \int_K R^{ad}(p_h; w_h) L^{ad}(\phi_h) dK. \quad (42)$$

Note that Eq.(41) is not the adjoint of Eq.(39), whereas Eq.(33) is the adjoint of Eq.(28), since they are derived from the same Lagrangian. Indeed, from Eq.(31) and Eq.(37), we have $a_h(w_h, p_h) = a_h^{ad}(p_h, w_h)$ [10].

Finally, differentiating \mathcal{L}_h with respect to u_h , we obtain:

$$J'(p_h, w_h) = p_h - \sum_{K \in \mathcal{T}_h} \delta_K R^{ad}(p_h; w_h); \quad (43)$$

the associated stopping criterium reads:

$$\|J'(p_h, w_h)\|_{L^2(\Omega)} = \|p_h - \sum_{K \in \mathcal{T}_h} \delta_K R^{ad}(p_h; w_h)\|_{L^2(\Omega)} < Tol. \quad (44)$$

Eq.(43) differs from that achievable from the separate stabilization of the state and adjoint equations, which does not involve the constraint equation and would read: $J'(p_h) = p_h$.

This approach features the following properties:

- stabilization is based on a *strongly consistent method* [16] (this will allow a convenient a posteriori error estimates in the field of estimates with residuals);
- there is coherence between state and adjoint stabilized equations;
- as we will see in Sec.4.3, this is a systematical method to achieve error estimates for linear control problems or functionals depending on PDE solution [4], without introducing second order terms (that need to be bounded).

Remark 3.1 *For the sake of simplicity in this work we have adopted an advection-diffusion state equation (see Eq.(10)); however the control problem and the Stabilized Lagrangian concept can be applied in the same manner for an equation that contains a reaction (zero-th order) term.*

4 A Posteriori Error Estimate

To obtain appropriate a posteriori error estimates for our optimal control problem, we consider a strategy dealing with error on cost functional [3], rather than the sum of errors on state, adjoint and control variables [9],[11],[12]. In fact, the error on cost functional can be bounded by suitable combination on the errors on state, adjoint and control variables, as we shall see in Sec.4.3.

4.1 Separating iteration error from discretization error

At the iterative step j the adaptivity will be based on the evaluation of the following error [3]:

$$|J(w^*, u^*) - J(w_h^j, u_h^j)|, \quad (45)$$

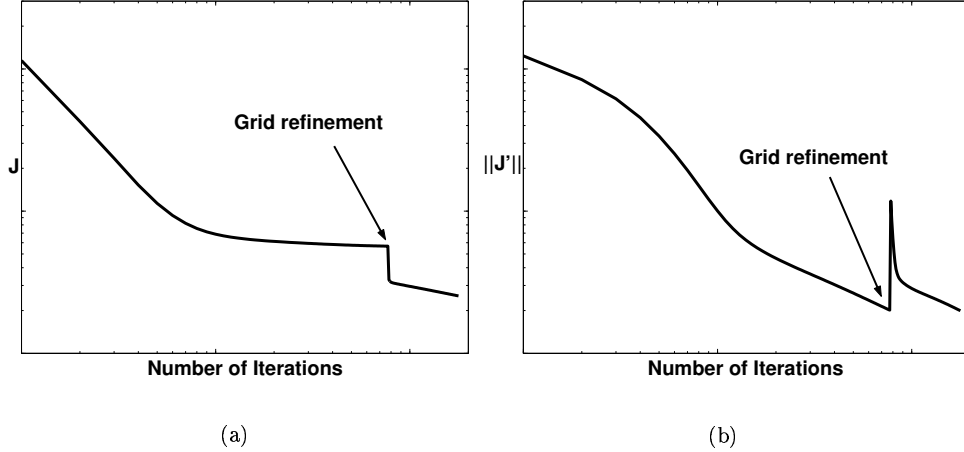


Figure 2: Typical behaviors of cost functional J (a) and iteration error (evaluated as $\|J'\|$) (b) versus the number of iterations of the optimization procedure; effects of the grid refinement at a generic step.

where $*$ indicates optimal variables. Eq.(45) involves both the *iteration* and *discretization* errors, say $\varepsilon_{IT}^{(j)}$ and $\varepsilon_D^{(j)}$, since:

$$J(w^*, u^*) - J(w_h^j, u_h^j) = \underbrace{J(w^*, u^*) - J(w^j, u^j)}_{\varepsilon_{IT}^{(j)}} + \underbrace{J(w^j, u^j) - J(w_h^j, u_h^j)}_{\varepsilon_D^{(j)}}, \quad (46)$$

the iteration error being the distance between the cost functional ideally computed on continuous variables at the step j and the cost functional on the optimum. If we use an adaptive procedure based on grid refinement, to reduce error (45), we make sure to reduce the component due to the discretization error, but not that of the iteration error. Indeed, although the latter is grid independent, when evaluated on the new grid, generally it increases, so that, after grid adaptation, error (45) can get larger. In Fig.2 we show the effects of grid refinement on the typical behaviors of cost functional $J(w_h, u_h)$ and on the iteration error with the number of iterations of the optimization method; notice that we assume the iteration error as the evaluation of the cost functional derivative $J'(p_h, u_h)$ in an appropriate norm, as we will see in Sec.4.2. In particular we have reported the re-evaluation of the iteration error corresponding to the computation of PDEs on the fine grid.

To avoid this problem we propose an adaptivity based, at each step, on the evaluation of the discretization error: $|J(w^j, u^j) - J(w_h^j, u_h^j)|$; this approach is effective since the very early stages of the optimization procedure, when we are still far from the optimal solution.

4.2 Evaluation of the iteration error

Definition 4.1 A control problem is linear if $\nabla \mathcal{L}(\mathbf{x})$ is linear in $\mathbf{x} := (w, p, u)$.

This is the case, e.g., if the control problem is governed by a linear state equation and

the cost functional is quadratic with respect to both w and u .

Theorem 4.1 *For linear control problems, the iteration error at the j -th iteration has the following expression:*

$$\varepsilon_{IT}^{(j)} = \frac{1}{2} (J'(p^j, u^j), u^* - u^j). \quad (47)$$

Proof. We have $\varepsilon_{IT}^{(j)} = \mathcal{L}(\mathbf{x}^*) - \mathcal{L}(\mathbf{x}^j)$, where $\mathbf{x}^* := (w^*, p^*, u^*)$ and $\mathbf{x}^j := (w^j, p^j, u^j)$, being the state equation satisfied adopting continuous variables. From the Fundamental Calculus Theorem, we obtain:

$$\varepsilon_{IT}^{(j)} = \int_{\mathbf{x}^j}^{\mathbf{x}^*} \nabla \mathcal{L}(\bar{\mathbf{x}}) \cdot \bar{\mathbf{x}} = \int_0^1 \nabla \mathcal{L}(\mathbf{x}^j + s(\mathbf{x}^* - \mathbf{x}^j)) \cdot (\mathbf{x}^* - \mathbf{x}^j) ds,$$

being $\bar{\mathbf{x}} := (\bar{w}, \bar{p}, \bar{u})$ and having applied the variables transformation $\bar{\mathbf{x}} = \mathbf{x}^j + s(\mathbf{x}^* - \mathbf{x}^j)$, with $s \in \mathbb{R}$. By writing[14]:

$$\varepsilon_{IT}^{(j)} = \nabla \mathcal{L}(\mathbf{x}^j) \cdot (\mathbf{x}^* - \mathbf{x}^j) + \int_0^1 (\nabla \mathcal{L}(s\mathbf{x}^* + (1-s)\mathbf{x}^j) - \nabla \mathcal{L}(\mathbf{x}^j)) \cdot (\mathbf{x}^* - \mathbf{x}^j) ds,$$

and using the fact that $\nabla \mathcal{L}(\mathbf{x})$ is linear and the optimal condition $\nabla \mathcal{L}(\mathbf{x}^*) = 0$, we obtain[14]:

$$\varepsilon_{IT}^{(j)} = \nabla \mathcal{L}(\mathbf{x}^j) \cdot (\mathbf{x}^* - \mathbf{x}^j) + \int_0^1 s \nabla \mathcal{L}(\mathbf{x}^* - \mathbf{x}^j) \cdot (\mathbf{x}^* - \mathbf{x}^j) ds = \frac{1}{2} \nabla \mathcal{L}(\mathbf{x}^j) \cdot (\mathbf{x}^* - \mathbf{x}^j).$$

Being w^j and p^j the exact state and adjoint solutions respectively, we finally have:

$$\varepsilon_{IT}^{(j)} = \frac{1}{2} \mathcal{L}_{,u}(\mathbf{x}^j)[u^* - u^j] = \frac{1}{2} (J'(p^j, u^j), u^* - u^j).$$

□

Corollary 4.1 *If a steepest-descent iterative method with constant relaxation parameter τ is used, the iteration error can be written as:*

$$\varepsilon_{IT}^{(j)} = -\frac{1}{2} \tau \|J'(p^j, u^j)\|^2 - \frac{1}{2} \tau \sum_{r=j+1}^{\infty} (J'(p^j, u^j), J'(p^r, u^r)). \quad (48)$$

Proof. In Eq.(47) we replace $u^* - u^j$ with $u^* - u^{j+1} - \tau J(p^j, u^j)$ (see Eq.(9)). By proceeding recursively we obtain:

$$\varepsilon_{IT}^{(j)} = \frac{1}{2} (J'(p^j, u^j), \sum_{r=j}^{\infty} -\tau J'(p^r, u^r)),$$

from which the result follows. □ By applying Eq.(48) to the advection-diffusion control problem defined in Sec.2.2, we obtain:

$$\varepsilon_{IT}^{(j)} = -\frac{1}{2} \tau \|p^j\|_{L^2(\Omega)}^2 - \frac{1}{2} \tau \sum_{r=j+1}^{\infty} (p^j, p^r)_{L^2(\Omega)}. \quad (49)$$

Notice that we can not evaluate correctly this error, since we don't know the values of p^r for $r \geq j+1$. For this reason we can estimate the iteration error as $|\varepsilon_{IT}^{(j)}| \approx \frac{1}{2} \tau \|p^j\|_{L^2(\Omega)}^2$, or more simply:

$$|\varepsilon_{IT}^{(j)}| \approx \|p^j\|_{L^2(\Omega)}^2, \quad (50)$$

that leads to the usual stopping criterium: $\|J'(p^j)\| < Tol$.

4.3 A posteriori estimate for the discretization error

We want to estimate the discretization error in Eq.(46).

Theorem 4.2 *For a linear control problem with a strongly consistent stabilized Lagrangian \mathcal{L}_h (Eq.(23) and Eq.(24)), letting $\mathbf{x}_h^j := (w_h^j, p_h^j, u_h^j)$ be the Galerkin approximation, the discretization error at the j -th iteration becomes:*

$$\varepsilon_D^{(j)} = \frac{1}{2} (J'(p^j, u^j), u^j - u_h^j) + \frac{1}{2} \nabla \mathcal{L}_h(\mathbf{x}_h^j) \cdot (\mathbf{x}^j - \mathbf{x}_h^j) + \Lambda_h(\mathbf{x}_h^j), \quad (51)$$

where $\Lambda_h(\mathbf{x}_h^j) := S_h(\mathbf{x}_h^j) + s_h(w_h^j, p_h^j; u_h^j)$, being $s_h(w_h^j, p_h^j; u_h^j)$ the stabilization term (Eq.(29)) induced from Eq.(23) on the state equation (Eq.(28)).

Proof. Taking into account Eq.(15), we have:

$$J(w^j, u^j) = \mathcal{L}(\mathbf{x}^j) - F(p^j; u^j) + a(w^j, p^j);$$

noting that the variables w^j and p^j are the continuous solutions of the state and adjoint equations corresponding to u^j , we obtain $J(w^j, u^j) = \mathcal{L}(\mathbf{x}^j)$. In the same manner, from Eq.(15) and Eq.(23), we can express $J(w_h^j, u_h^j)$ as:

$$J(w_h^j, u_h^j) = \mathcal{L}_h(\mathbf{x}_h^j) - S_h(\mathbf{x}_h^j) - F(p_h^j; u_h^j) + a(w_h^j, p_h^j).$$

Adding and subtracting the term $s_h(w_h^j, p_h^j; u_h^j)$ to the right hand side of the previous equation, we obtain that $J(w_h^j, u_h^j) = \mathcal{L}_h(\mathbf{x}_h^j) - \Lambda_h(\mathbf{x}_h^j)$, since w_h^j satisfies a state equation like Eq.(28) (with a right hand side depending on j) in which p_h^j can play the role of test function.

In order to provide an appropriate estimate, we need to separate entirely the discretization error from the stabilization error:

$$\varepsilon_D^{(j)} = \varepsilon_{D1}^{(j)} + \varepsilon_{D2}^{(j)} + \Lambda_h(\mathbf{x}_h^j) = (\mathcal{L}(\mathbf{x}^j) - \mathcal{L}_h(\mathbf{x}^j)) + (\mathcal{L}_h(\mathbf{x}^j) - \mathcal{L}_h(\mathbf{x}_h^j)) + \Lambda_h(\mathbf{x}_h^j).$$

The expression of $\varepsilon_{D1}^{(j)}$ is available only if an expression for \mathcal{L}_h is known, as in the case of the stabilized Lagrangian (Eq.(23)); this would not be the case when the state and adjoint equations are stabilized directly [4]. From Eq.(23) and Eq.(24), we have:

$$\varepsilon_{D1}^{(j)} = -S_h(w^j, p^j, u^j) = - \sum_{K \in \mathcal{T}_h} \delta_K (R(w^j; u^j), R^{ad}(p^j; w^j)).$$

This term is identically zero, due to the property of strong consistency. By applying the Fundamental Calculus Theorem, using the linearity of $\nabla \mathcal{L}_h(\mathbf{x})$ [14], observing that $\nabla \mathcal{L}(\mathbf{x}^j) \cdot (\mathbf{x}^j - \mathbf{x}_h^j) \equiv \mathcal{L}_{,u}(\mathbf{x}^j)[u^j - u_h^j]$ for the continuous variables and proceeding as done in Theorem (4.1), we obtain:

$$\varepsilon_{D2}^{(j)} = \frac{1}{2} (J'(p^j, u^j), u^j - u_h^j) + \frac{1}{2} \nabla \mathcal{L}_h(\mathbf{x}_h^j) \cdot (\mathbf{x}^j - \mathbf{x}_h^j).$$

Then Eq.(51) follows. \square

Now we apply the abstract result of Theorem 4.2 to the advection–diffusion control problem defined in Sec.2.2. From Eq.(24) and Eq.(29) we have:

$$\Lambda_h(\mathbf{x}_h^j) = - \sum_{K \in \mathcal{T}_h} \delta_K \int_K G(w_h^j) R(w_h^j; u_h^j) dK. \quad (52)$$

Putting into evidence the contributions of the single elements $K \in \mathcal{T}_h$ (see e.g. [3],[4]), we obtain:

$$|\varepsilon_D^{(j)}| \leq \eta_D^{(j)} := \frac{1}{2} \sum_{K \in \mathcal{T}_h} \{ (\omega_K^p \rho_K^w + \omega_K^w \rho_K^p + \omega_K^u \rho_K^u) + \lambda_K \}, \quad (53)$$

where (see Sec.3 for symbol definitions):

$$\begin{aligned}
\rho_K^w &:= \|R(w_h^j; u_h^j)\|_K + h_K^{-\frac{1}{2}} \|r(w_h^j)\|_{\partial K}, \\
\omega_K^p &:= \|(p^j - p_h^j) - \delta_K L^{ad}(p^j - p_h^j) + \delta_K G'(w^j - w_h^j)\|_K + h_K^{\frac{1}{2}} \|p^j - p_h^j\|_{\partial K}, \\
\rho_K^p &:= \|R^{ad}(p_h^j; w_h^j)\|_K + h_K^{-\frac{1}{2}} \|r^{ad}(p_h^j)\|_{\partial K}, \\
\omega_K^w &:= \|(w^j - w_h^j) - \delta_K L(w^j - w_h^j)\|_K + h_K^{\frac{1}{2}} \|w^j - w_h^j\|_{\partial K}, \\
\rho_K^u &:= \|J'(p_h^j, w_h^j) + J'(p^j)\|_K = \|p^j + p_h^j - \delta_K R^{ad}(p_h^j; w_h^j)\|_K, \\
\omega_K^u &:= \|u^j - u_h^j\|_K, \\
\lambda_K &:= 2\delta_K \|R(w_h^j; u_h^j)\|_K \|G(w_h^j)\|_K, \\
r(w_h^j) &:= \begin{cases} -\frac{1}{2} \left[\nu \frac{\partial w_h^j}{\partial n} \right], & \text{on } \partial K \setminus \partial \Omega, \\ -\nu \frac{\partial w_h^j}{\partial n}, & \text{on } \partial K \in \Gamma_N, \end{cases} \\
r^{ad}(p_h^j) &:= \begin{cases} -\frac{1}{2} \left[\nu \frac{\partial p_h^j}{\partial n} + \mathbf{V} \cdot \mathbf{n} p_h^j \right], & \text{on } \partial K \setminus \partial \Omega, \\ -\left(\nu \frac{\partial p_h^j}{\partial n} + \mathbf{V} \cdot \mathbf{n} p_h^j \right), & \text{on } \partial K \in \Gamma_N, \end{cases}
\end{aligned} \tag{54}$$

Notice that ∂K indicates the boundary of the element $K \in \mathcal{T}_h$, while the term $[\cdot]$ denotes the jump across the single edge ∂K of the embraced quantity.

4.3.1 Evaluation of the estimate (53) by quadratic reconstruction

Before using the estimate (53) we need to evaluate w^j , p^j and u^j ; to this aim we propose a technique based on quadratic reconstruction of FE-linear solutions:

- w^j is replaced by $(w_h^j)^q$, the quadratic reconstruction of w_h^j ;
- p^j is replaced by $(p_h^j)^q$, the quadratic reconstruction of p_h^j ;
- when considering the optimization steepest-descent method (with $\tau^j = \tau$ constant), u^j is replaced by $(u_h^j)^q := u_h^j - \tau(J'((p_h^j)^q, (w_h^j)^q) - J'(p_h^j, w_h^j))$.

We propose the following quadratic reconstruction method, that can be applied for a generic PDE solution v :

- compute the generic numerical solution v_h by linear finite elements on the triangular grid \mathcal{T}_h ;
- refine uniformly the mesh \mathcal{T}_h , dividing each element in four new elements, to obtain the grid \mathcal{T}_h^f ;
- resolve the PDE on the fine grid \mathcal{T}_h^f , obtaining the new FE-linear solution v_h^f ;
- $\forall K \in \mathcal{T}_h$ take the restriction $v_h^f|_K$ of v_h^f to every one of the four elements of \mathcal{T}_h^f contained in K ;
- $\forall K \in \mathcal{T}_h$ let v_h^q be the quadratic reconstruction of $v_h^f|_K$ (a second order polynomial function on K), so that the following condition is satisfied[20]:

$$find v_K^q \in \mathbb{P}^2(K) : \|v_K^q - v_K^f\|_{H^1(K)} \text{ minimum on } K !.$$

4.3.2 Adaptive strategy

We propose a general strategy to apply to linear control problems:

- we use the optimization iterative method till convergence to iteration error tolerance;
- we adapt the grid with an error balancing criterium over grid elements in an iterative setting led by the error indicator $\eta_D^{(j)}$ (53), till convergence to discretization error tolerance;
- we re-evaluate the variables and the iteration error on the adapted grid;
- if the iteration error is increased (as it happens quite frequently), we perform the optimization iterative process once time, till new convergence to prescribed tolerance;
- we re-evaluate the discretization error and, if necessary, we adapt the grid anew;
- we repeat this procedure till when both iteration and discretization errors are below the given tolerances.

This procedure is very convenient computationally: owing to the uniqueness of the solution of linear control problems,[10] we can apply the iterative procedure to PDE solved on a coarse grid, and, only near optimal solution, perform mesh adaptation. In practice two different tolerances for iteration and discretization errors can be adopted; a better strategy should account for error balancing [5], however this might not be convenient if the estimate of the iteration error is too rough.

5 Numerical Tests

In this section we report some numerical tests proving the effectiveness of the proposed methods. Particularly, we refer to two practical problems, that can be interpreted as pollution control problems. The previous one refers to a water pollution situation in which we regulate the emissive sources to keep the pollutant concentration below a desired threshold in a river. The second problem deals with an air pollution situation, referring to emissions by industrial plants or chimneys.

To this aim, let us consider the particular case in which the control term u in the state equation (10) is defined only in some regions $U_i \subset \Omega$, with $i = 1, \dots, N$. This is the case, e.g. if we have some pollutant sources located in the domain Ω and we want to regulate them in order to keep the pollutant concentration below a desired threshold in the observation area D . In particular we assume $u = \sum_{i=1}^N u_i \chi_{U_i}$, being χ_{U_i} the characteristic function of the subdomain U_i and u_i the control term located in U_i , extended by zero outside U_i . According to the choice of u , Eq.(13) reads:

$$F(\varphi; u) = \sum_{i=1}^N \int_{U_i} u_i \varphi \, dU_i; \tag{55}$$

in the same manner the optimal control constraint (20) is:

$$\mathcal{L}_{,u}[\psi] = \sum_{i=1}^N \int_{U_i} p \psi \, dU_i = 0, \quad \forall \psi \in L^2(\Omega), \tag{56}$$

while the cost functional derivative becomes:

$$J'(p) = \sum_{i=1}^N p \chi_{U_i} = p \sum_{i=1}^N \chi_{U_i}, \quad (57)$$

which leads to the following stopping criterium: $\|J'(p)\|_{L^2(\Omega)} = \{\sum_i^N \|p\|_{L^2(U_i)}^2\}^{\frac{1}{2}} < Tol$.

Applying the new form for u to the discrete problem (see Sec.3), the cost functional derivative can be expressed as:

$$J'(p_h, u_h) = \sum_{i=1}^N \left(p_h - \sum_{K \in \mathcal{T}_h^i} \delta_K R^{ad}(p_h; w_h) \right) \chi_{U_i}, \quad (58)$$

where \mathcal{T}_h^i is the union of the triangles K covering U_i ; the associated stopping criterium reads:

$$\|J'(p_h, u_h)\|_{L^2(\Omega)} = \left\{ \sum_{i=1}^N \left\| p_h - \sum_{K \in \mathcal{T}_h^i} \delta_K R^{ad}(p_h; w_h) \right\|_{L^2(U_i)}^2 \right\}^{\frac{1}{2}} < Tol. \quad (59)$$

Similarly we can adapt to this specific contest the results and the numerical methods proposed in Sec.4. In particular the estimate (53) yields, Eq.(54) holds, and in our case the terms ρ_K^u and ω_K^u take the following form:

$$\begin{aligned} \rho_K^u &= \|p^j + p_h^j - \delta_K R^{ad}(p_h^j; w_h^j)\|_{K \in \cup_i U_i}, \\ \omega_K^u &= \|u^j - u_h^j\|_{K \in \cup_i U_i}. \end{aligned} \quad (60)$$

We solve numerically both the state and adjoint equations by the Galerkin–FE linear method on an initial (coarse) grid composed by triangular elements. The steepest–descent iterative method is used to solve the control problem, for which we assume a relaxation parameter τ constant in the iterative process. The grid adaptivity procedure is carried out using the estimate (53) and the method proposed in Sec.4; we will compare the results provided by the error indicator η_D (see Eq.(53)) with those obtained by virtue of the following ones:

- the *energy norm* error indicator[21] for the state equation, i.e.:

$$\eta_E^w := \sum_{K \in \mathcal{T}_h} h_K \rho_K^w, \quad (61)$$

- the error indicator[4]:

$$\eta_E^{wp} := \sum_{K \in \mathcal{T}_h} h_K \{(\rho_K^w)^2 + (\rho_K^p)^2 + (\rho_K^u)^2\}^{\frac{1}{2}}, \quad (62)$$

where ρ_K^w , ρ_K^p and ρ_K^u are defined in Eq.(54) and Eq.(60) (for the sake of simplicity, we have dropped the apex (j) on the error indicators). Results are compared with those obtained on fine grids, that we consider an accurate guess of the exact solution.

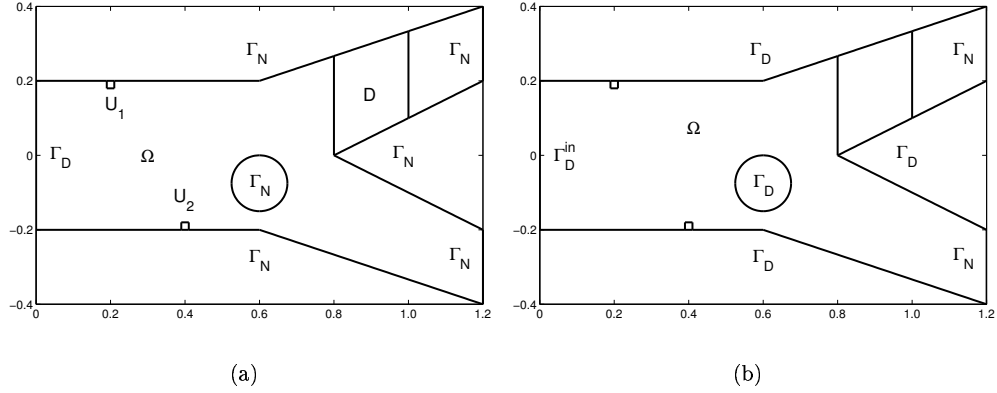


Figure 3: Test 1. Reference domain for the control problem. We report the boundary conditions for the advection–diffusion equation (10) (a) and for the Stokes problem (63) (b).

5.1 Test 1: water pollution

Let us consider a first test case that can be referred as a water pollution control problem. The optimal control problem target consist, e.g. in regulating the emissive rates of pollutants (rising e.g. from refusals of industrial or agricultural plants) to keep the concentration of such substances below a desired threshold in a branch of a river. Let us notice that, for this problem, we will refer to adimensional quantities.

We refer to the domain reported in Fig.3a, that could represent a river that bifurcates into two branches past a hole, which stands for, e.g., an island. Referring to Eq.(10), we obtain the velocity field \mathbf{V} as the solution of the following Stokes problem:

$$\begin{cases} -\mu\Delta\mathbf{V} + \nabla p = \mathbf{0}, & \text{in } \Omega, \\ \mathbf{V} = (1 - (\frac{y}{0.2})^2, 0)^T, & \text{on } \Gamma_D^{in}, \\ \mathbf{V} = \mathbf{0}, & \text{on } \Gamma_D, \\ \mu\nabla\mathbf{V} \cdot \mathbf{n} - p\mathbf{n} = \mathbf{0}, & \text{on } \Gamma_N, \end{cases} \quad (63)$$

where p stands for the pressure, while Γ_D^{in} , Γ_D and Γ_N are indicated in Fig.3b. Here the Stokes problem serves only the purpose to provide an appropriate velocity field for the advection–diffusion problem, since the latter governs our control problem, the analysis provided in Sec.2 and Sec.3 applies. Moreover, for the sake of simplicity, we adopt the method and the a posteriori error estimate (53) proposed in Sec.4. Infact, this approach is not fully coherent, being the velocity field \mathbf{V} computed numerically by means of the same grid adopted to solve the control problem, i.e. we consider \mathbf{V}_h instead of \mathbf{V} .

For the Stokes problem we assume $\mu = 0.1$, for which the Reynolds number reads $\mathbb{R}e \approx 10$; we solve the problem by means of linear finite elements with stabilization (see [16]), computed with respect to the same grid of the control problem. In Fig.4 we report the velocity field and its intensity obtained by solving the Stokes problem.

For our control problem we assume $\nu = 0.015$, $u = 50$ in both the emissive areas U_1 and U_2 and $z_d = 0.1$ in the observation area D . Let us notice that $u = 50$ is the initial value of the control function, that can be interpreted as the maximum rate of emission of pollutants (divided by the emissive area), while the state variable w reads

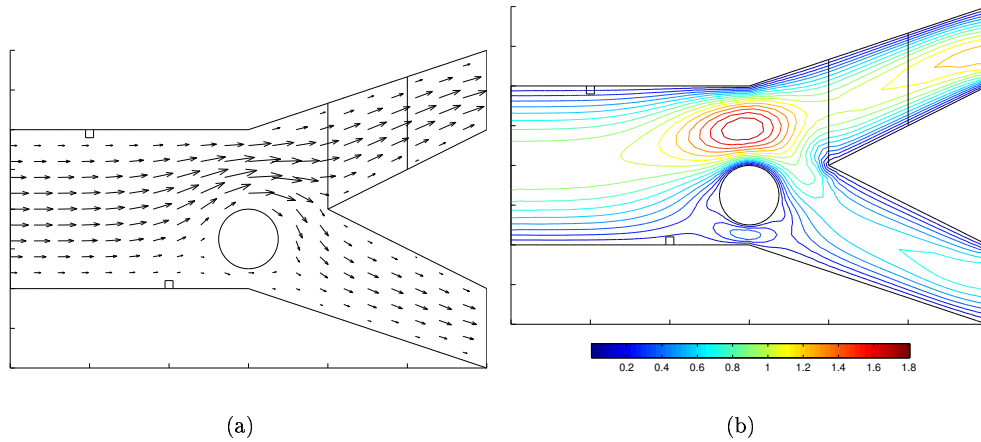


Figure 4: Test 1. Velocity field obtained by the Stokes problem: flow arrows (a) and velocity isolines (b).

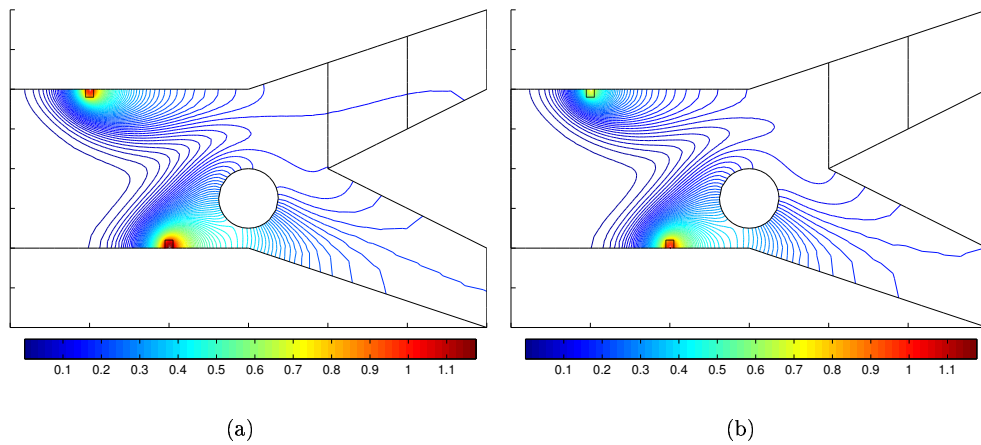


Figure 5: Test 1. State solution at initial step (a) and at convergence ($\|J'\| \leq 1.63 \cdot 10^{-7}$) (b); at convergence it is $u_1 = 0.705 \cdot u_{max}$, while $u_2 = 0.860 \cdot u_{max}$.

as the pollutant concentration. We solve numerically the problem by means of the iterative method proposed in Sec.2.1, with $\tau = 500$ with respect to an initial grid of 212 triangular elements. Moreover, we perform grid adaption according to the a posteriori error estimate (53) and the method proposed in Sec.4.

In Fig.5 we report the results of the optimal control problem: at the initial step, when the value of the state solution in the observation area is higher than the desired level z_d (left), and at convergence ($\|J'\| \leq 1.63 \cdot 10^{-7}$) (right). Let us observe that the emissive sources u_1 and u_2 must be reduced with respect to the initial value $u_{max} = 50$. More precisely, we obtain that at convergence:

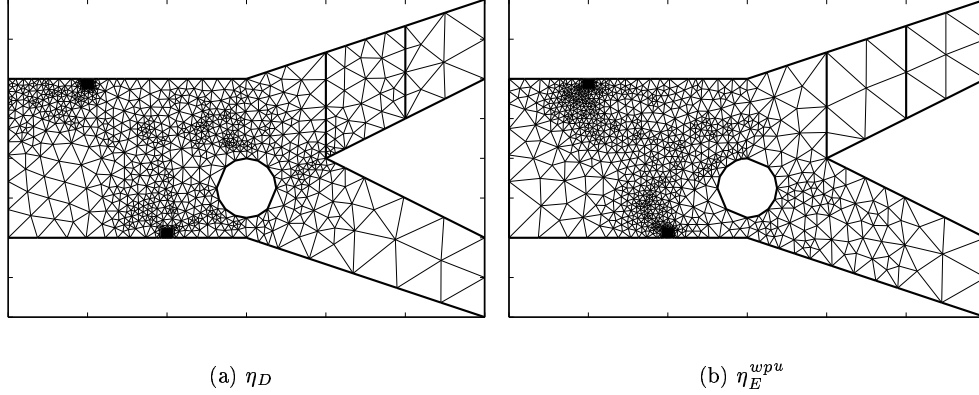


Figure 6: Test 1. Adapted meshes (2700 elements) obtained using the error indicators η_D (left) and η_E^{wpu} (right); the error indicator η_E^w produces an adapted grid very similar to that on the right.

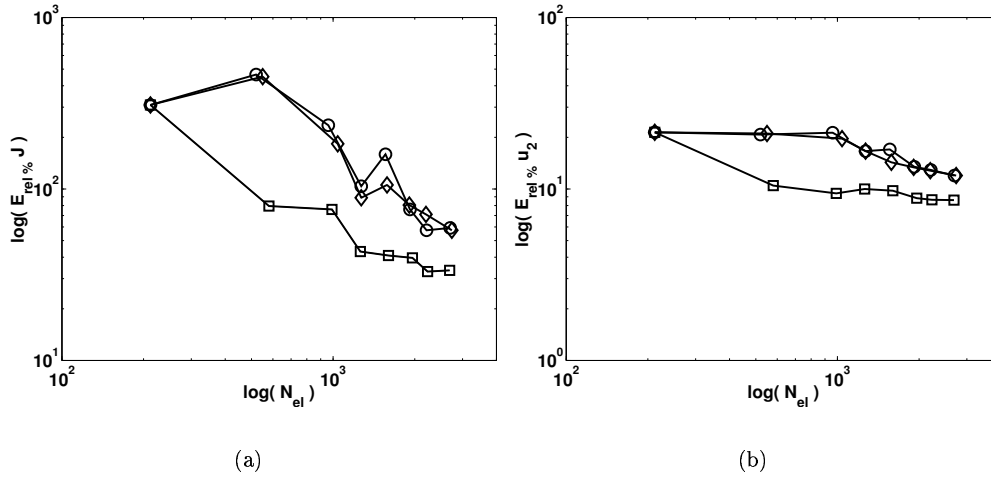


Figure 7: Test 2. Numerical results for adaptivity driven by the error indicators η_D (\square), η_E^w (\diamond) and η_E^{wpu} (\circ) at convergence; we report relative errors (in percent) on cost functional J (a) and on u_2 (b) with the number of elements (N_{el}) in logarithmic scale for both axes; let us notice that analogous results hold also for the error on u_1 .

- the minimum value of the cost functional is $J = 5.40 \cdot 10^{-9}$,
- the emission rates become $u_1 = 0.705 \cdot u_{max}$ and $u_2 = 0.860 \cdot u_{max}$.

In Fig.6 we show two grids adapted by means of the estimates on the error indicators η_D and η_E^{wpu} ; the grid that we would obtain by virtue of the error indicator η_E^w results similar to that obtained by η_E^{wpu} . In Fig.7 we provide an error comparison for the cost

functional and the value of u_2 on different grids and we prove the validity of the error indicator η_D and the adaptive method. Let us notice that analogous results can be obtained for the error behaviour of u_1 . The adaptivity driven by the error indicator η_D fits elements in those domain zones which are more relevant for the control problem (i.e. $\{U_i\}$ and D), while the error indicator η_E^w governs the distribution of elements in those areas which are relevant for the state solution. Finally, the error indicator η_E^{wpu} fits elements in those areas which are relevant for both the state and adjoint equations and where the derivative of the cost functional is defined (in the emissive zones); however these contributions to error indicator are not balanced and, typically, the state error component dominates the other ones. This explain why η_E^{wpu} and η_E^w generate similar grids. Let us notice that we consider as appropriate guess of the exact one, a solution that is obtained adopting a grid with about 8000 elements, with elements properly distributed all over the domain.

5.2 Test 2: air pollution

The evolution of pollutant concentration in atmosphere is a complex phenomenon which depends on the pollutant type, air composition (presence of other pollutants) and meteorological situation (see [6]). If we consider particular pollutants, such as the Sulfur Oxides (SO_2), we can admit that in urban scales (see [6]) the concentration behavior can be modelled by advection–diffusion equations, neglecting, with acceptable accuracy, the reactive terms. Moreover we consider a stationarity frame, for which the advection–diffusion equation (10) can be assumed to model the pollutant behavior in air and the optimal control setting presented in Sec.2 can be adopted. Let us notice that Eq.(10) models the diffusion and transport of pollutant at the emissive height, i.e. in a plane $x - y$ parallel to soil at height H . Modelling air motion is a very complex matter, especially in the Planetary Boundary Layer (see [18]), depending on a broad range of factors, such as: soil orography, type of soil (urban or rural areas), pressure gradients, ground heating and Coriolis force. For this reason air motion is modelled by means of the medium wind field, plus terms taking into account the turbulent diffusion, which can be related to atmospheric stability (stability classes are typically subdivided as stable, neutral and instable; see Fig.8 and [6]). In the contest of Eq.(10), as reported in [6], the vector \mathbf{V} takes into account the medium wind field, while the diffusivity term ν represents the turbulent diffusion. The molecular diffusivity is much smaller and can be neglected. As we have previously anticipated, Eq.(10) describes the transport and diffusion of the pollutant in a plane, while a complete model should take into account 3D phenomena. We can adopt a *quasi-3D* model if we consider the pollutant concentration $w(x, y, z)$ depending on the concentration at the emissive height (which is the solution of Eq.(10)) multiplied by a function $\pi(x, y, z)$ which takes into account the distribution of the concentration with the respect to the vertical coordinate z . The function π can be generated by exploiting the analogy with a Gaussian model (see [6]). The latter, by assuming a constant wind field, provides the pollutant concentration in a parallelepipedal domain (3D) emitted by a unique source:

$$\pi(x, y, z) := e^{-\frac{1}{2}\left(\frac{z-H}{\sigma_z}\right)^2} + e^{-\frac{1}{2}\left(\frac{z+H}{\sigma_z}\right)^2}, \quad (64)$$

where σ_{xy} and σ_z are the dispersion coefficients, which account for atmospherical stability class and soil orography (see [6]). For example, considering neutral atmospherical

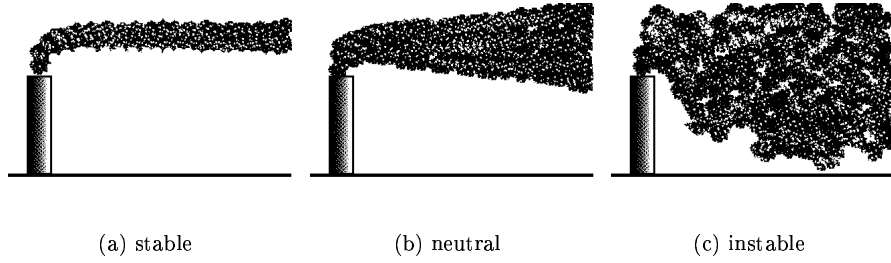


Figure 8: Test 2. Atmospheric stability conditions: emission chimney behavior in a wind field.

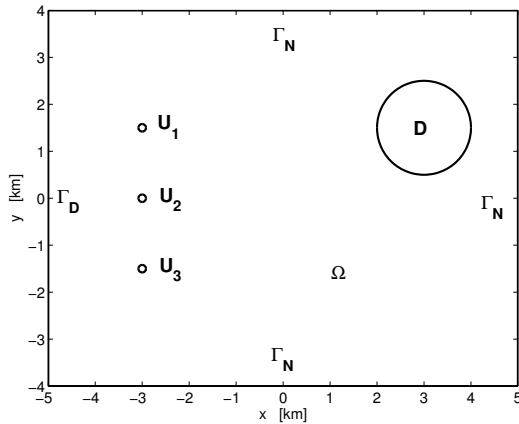


Figure 9: Test 2. Reference domain for emission control problem in air.

conditions and urban and rural soil, we have:

$$\begin{cases} \sigma_{xy} = 0.120 r (1 + 0.00025 r)^{-\frac{1}{2}}, [m], \\ \sigma_z = 0.040 r (1 + 0.00020 r)^{-\frac{1}{2}}, [m], \end{cases} \quad (65)$$

being r the radial coordinate with origin in the emissive source.

Our target consists in regulate the emission rates form N chimneys U_i to keep the pollutant concentration below a desired level in an observation area D , e.g. a town. Particularly we refer to a domain such as the one reported in Fig.9, for which we consider the optimal control setting presented in Sec.2. To this aim we make the following assumptions:

- pollutant concentration distribution is governed by $2D$ linear transport–diffusion equation (Eq.(10)) in non–conservation form, in the plane $x - y$, at effective chimney height; the concentration distribution with respect to z is described by the Gauss model, according to the function π in Eq.(64);
- turbulent diffusion coefficients depending on radial coordinate with origin at the emissive zone ($\nu = \nu(r)$);

- according to Fig.9, $\mathbf{V} = V \hat{\mathbf{x}}$;
- emissive areas U_i are approximately at the same distance from the observation area D , in order to consider the same diffusion coefficient $\nu = \frac{\sigma^2}{2r} V$;
- all the emissive plants stand at the same height H .

According with these assumptions we can adopt, for the optimal control problem, the same setting presented in Sec.2.2, in which w is the pollutant concentration at the emissive height H and $u = \sum_{i=1}^N u_i \chi_{U_i}$ is the emission rate (control function) (normalized with respect to an appropriate emissive volume). We assume in Eq.(11):

$$g(\mathbf{x}, y) = 2e^{-\frac{1}{2}(\frac{H}{\sigma_z(\mathbf{x}, y)})^2}, \quad (66)$$

which is the projection term of pollutant concentration at soil, and $z_d = w_d^0$, which stands for the desired pollutant concentration at soil in the observation area D (let us notice that for SO_2 the attention level is $125 \mu\text{g}/\text{m}^3$, while the alarm level is $250 \mu\text{g}/\text{m}^3$; see [6]).

For our test case we refer to the domain reported in Fig.9 and we assume neutral atmospheric conditions and SO_2 as pollutant, for which we take $100 \mu\text{g}/\text{m}^3$ as target concentration level (w_d^0); this value is in general lower than both attention and alarm levels, however it may account for preexistent pollutant level in the domain. We assume that the maximum emission rate for chimneys is $u_{max} = 800 \text{ g/s}$ at effective height $H = 100 \text{ m}$ in a constant wind field ($V = 2.5 \text{ m/s}$). The control function u is the rate of emission normalized with respect to an appropriate emission volume. We solve numerically both the state and adjoint equations by the Galerkin–FE linear method on an initial grid of 808 elements. The steepest–descent iterative method is used to solve the control problem, for which we assume a relaxation parameter $\tau = 800$. The grid adaptivity procedure is carried out using the estimate (53) and the method proposed in Sec.4; we will compare the results provided by the error indicator η_D (see Eq.(53)) with those obtained by virtue of the estimates (61) and (62).

We report pollutant concentration results in Fig.10: at the initial step (top), when the concentration in observation area is far superior than the admitted limit, and then at convergence of the optimization iterative process (bottom). We observe that the emissions in the first and the second industrial complexes must be reduced, while the control problem does not involve appreciably the emissions of the third one. We report the results of the optimal control problem (at convergence when $\|J'(p_h^j, u_h^j)\| \leq 1.8 \cdot 10^{-8}$, for the adimensional problem) for some interesting quantities:

- the minimum cost functional is $J = 2.50 \cdot 10^{-9}$ (for the adimensional problem),
- the emission rates become $u_1 = 0.0858 \cdot u_{max}$, $u_2 = 0.325 \cdot u_{max}$ and $u_3 = 1.00 \cdot u_{max}$,
- the maximum value of the concentration of SO_2 in the observation area is $w_{max}^0 = 187 \mu\text{g}/\text{m}^3$, which is lower than the alarm level.

In Fig.11 we show two grids adapted by virtue of the estimates on the error indicators η_D and η_E^{wpu} ; the grid that we would obtain by means of the error indicator η_E^w does not differ significantly from that obtained using η_E^{wpu} . In Fig.12 we show an error comparison for the cost functional and the value of w_{max}^0 on different grids, for which we prove the validity of the error indicator η_D and the adaptive method. In particular, the adaptivity

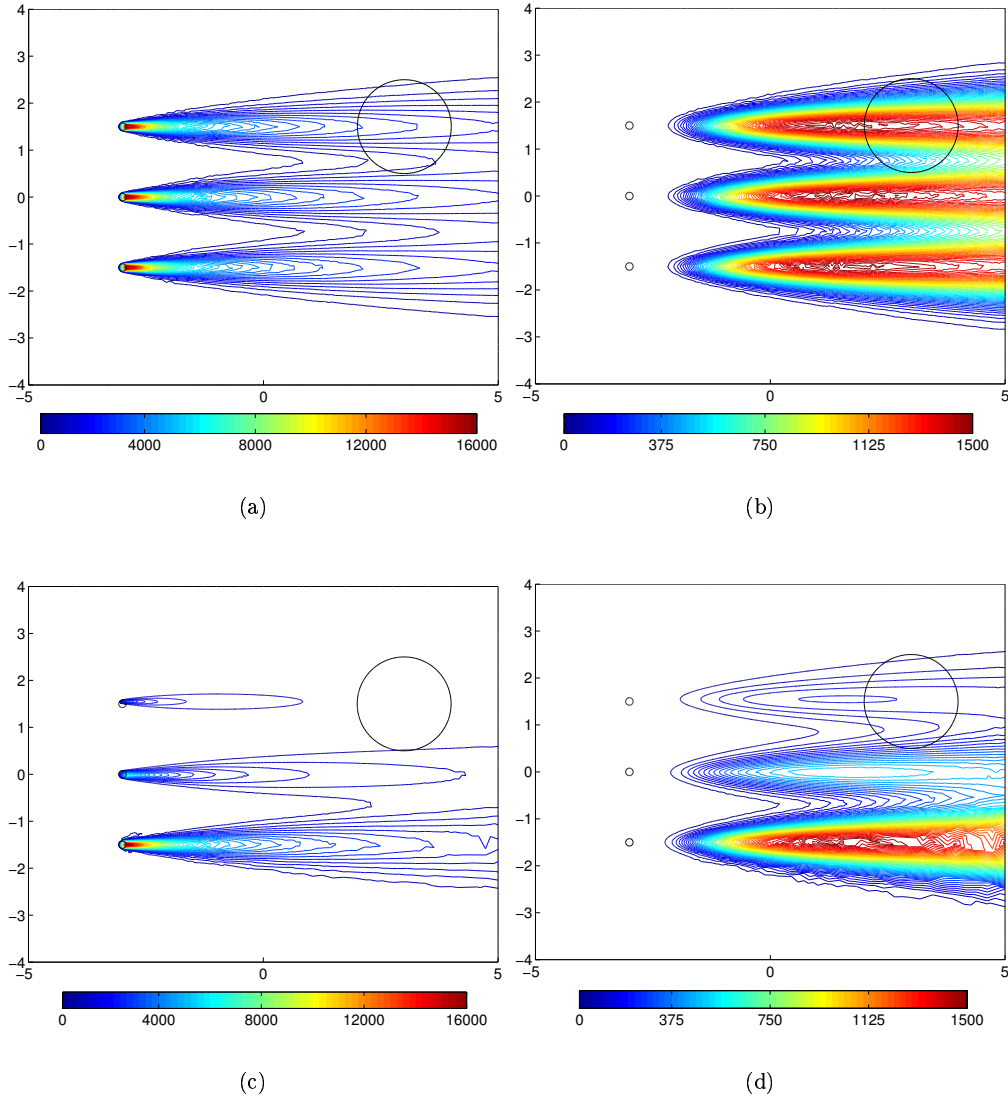


Figure 10: Test 2. State solutions at initial step and at convergence ($\|J'\| \leq 1.8 \cdot 10^{-8}$); pollutant initial concentrations $[\mu g/m^3]$ at effective height (a) and at soil (b) and, at convergence, in height (c) and at soil (d).

driven by the error indicator η_D leads to a distribution of elements in those domain zones involved in the control problem (i.e. $\{U_i\}$ and D), whereas the error indicator η_E^w governs the distribution of elements in the most crucial areas for the state solution. Similarly, the error indicator η_E^{wpu} fits elements in those areas which are relevant for the state and adjoint equations and where the derivative of the cost functional is defined, without balancing their contribution on the control problem. As already mentioned, η_E^w generates a grid quite similar to that obtained by this last estimate. Let us notice that

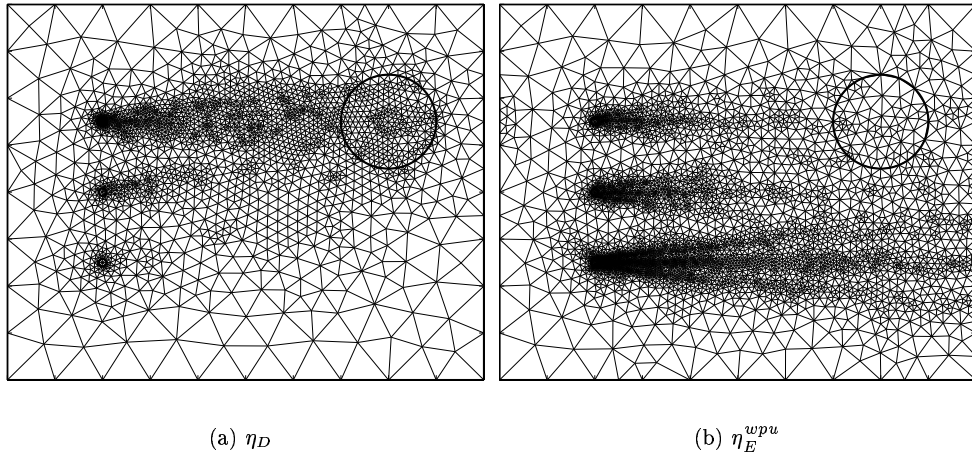


Figure 11: Test 2. Adapted meshes (11000 elements) obtained using the error indicators η_D (left) and η_E^{wpu} (right); the error indicator η_E^w produces an adapted grid very similar to that at the right.

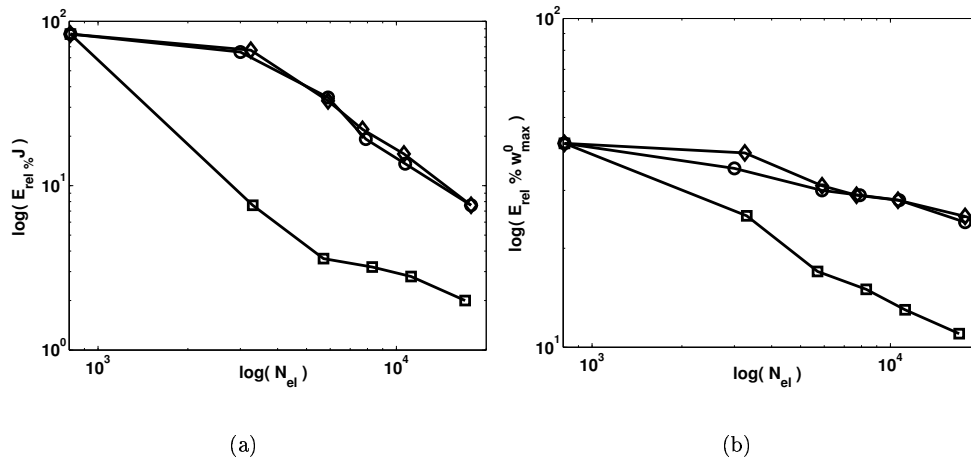


Figure 12: Test 2. Numerical results for adaptivity driven by the error indicators η_D (\square), η_E^w (\diamond) and η_E^{wpu} (\circ) at convergence; we report relative errors (in percent) on cost functional J (a) and on w_{max}^0 (b) with the number of elements (N_{el}) in logarithmic scale for both axes.

we consider as exact the solution that is actually computed using a grid with more than 80000 elements.

6 Conclusions

In this work we have proposed a general approach to linear control problems governed by an advection–diffusion state equation, dealing with both the theoretical aspects and the numerical ones. Particularly we have introduced the concept of the Stabilized Lagrangian to avoid numerical instabilities, providing a valid tool to afford coherently control problems governed by advection–diffusion equations. On this basis we have proposed an error estimator dealing with the error on the cost functional, for which we have provided a separation of the discretization error from the iteration error. The estimator of the discretization error is used in the field of an adaptive method to refine the grid. The effectiveness of the proposed methods is proved by means of numerical tests. The methods proposed in this work can be easily extended to the case of control problems governed by advection–diffusion–reaction equations. Moreover the proposed approach can be conveniently applied to problems of real life interest, e.g. to pollution control problems in the field of Environmental Engineering.

Acknowledgements

We are sincerely grateful to Prof. V.I. Agoshkov, Ing. G. Rozza, Ing. M. Restelli and Dr. L. Bonaventura for their advise and help. We acknowledge the Italian MIUR for the partial financing under the project COFIN03 “Numerical Modelling for Scientific Computing and Advanced Applications” and the École Polytechnique Fédérale de Lausanne (EPFL).

References

- [1] V.I. Agoshkov, *Optimal Control Methods and Adjoint Equations in Mathematical Physics Problems*, Institute of Numerical Mathematics, Russian Academy of Science, Moscow, 2003.
- [2] A.K. Aziz, J.W. Wingate and M.J. Balas, *Control Theory of Systems Governed by Partial Differential Equations*, Academic Press, New York, 1971.
- [3] R. Becker, H. Kapp and R. Rannacher, Adaptive finite element methods for optimal control of partial differential equations: basic concepts, *SIAM J. Control Opt.* **39**(1) (2000) 113–132.
- [4] R. Becker and R. Rannacher, An optimal control approach to a posteriori error estimation in finite element methods, *Acta Numerica* **10** (2001) 1–102.
- [5] M. Braack and A. Ern, A posteriori control of modelling errors and Discretization errors, *SIAM Multiscale Model. Simul.* **1**(2) (2003) 221–238.
- [6] G. Finzi, G. Pirovano and M. Volta, *Gestione della Qualità dell’aria. Modelli di Simulazione e Previsione*, Mc Graw–Hill, Milano, 2001.
- [7] L. Formaggia, S. Micheletti and S. Perotto, Anisotropic mesh adaptation in computational fluid dynamics: application to the advection–diffusion–reaction and the Stokes problems, *Appl. Numer. Math.* **51**(4) (2004) 511–533.
- [8] A.N. Kolmogorov and S.V. Fomin, *Elements of Theory of Functions and Functional Analysis*, V.M. Tikhomirov, Nauka, Moscow, 1989.

- [9] R. Li, W. Liu, H. Ma and T. Tang, Adaptive finite element approximation for distributed elliptic optimal control problems, *SIAM J. Control Opt.* **41**(5) (2001) 1321–1349.
- [10] J.L. Lions, *Optimal Control of Systems Governed by Partial Differential Equations*, Springer–Verlag, New York, 1971.
- [11] W. Liu and N. Yan, A posteriori error estimates for some model boundary control problems, *J. Comput. Appl. Math.* **120** (2000) 159–173.
- [12] W. Liu and N. Yan, A Posteriori error estimates for distributed convex optimal control problems, *Adv. Comput. Math.* **15** (2001) 285–309.
- [13] B. Mohammadi and O. Pironneau, *Applied Shape Optimization for Fluids*, Clarendon Press, Oxford, 2001.
- [14] M. Picasso, Anisotropic a posteriori error estimates for an optimal control problem governed by the heat equation, *Int. J. Numer. Methods PDE* (2004), submitted.
- [15] O. Pironneau and E. Polak, Consistent approximation and approximate functions and gradients in optimal control, *SIAM, J. Optim. Control* **41**(2) (2002) 487–510.
- [16] A. Quarteroni and A. Valli, *Numerical Approximation of Partial Differential Equations*, Springer–Verlag, Berlin and Heidelberg, 1994.
- [17] J. Sokolowski and J.P. Zolesio, *Introduction to Shape Optimization (Shape Sensitivity Analysis)*, Springer–Verlag, New York, 1991.
- [18] R.B. Stull, *An Introduction to Boundary Layer Meteorology*, Kluwer Academic Publishers, Dordrecht, 1988.
- [19] F.P. Vasiliev, *Methods for Solving the Extremum Problems*, Nauka, Moscow, 1981.
- [20] D.A. Venditti and D.L. Darmofal, Grid adaption for functional outputs: application to two-dimensional inviscid flows, *J. Comput. Physics* **176** (2002) 40–69.
- [21] R. Verfürth, *A Review of A Posteriori Error Estimation and Adaptive Mesh–Refinement Techniques*, Wiley, Teubner, 1996.